

MONTHLY MEMBERSHIP PROGRESS REPORT

LOCATION ALBERTA

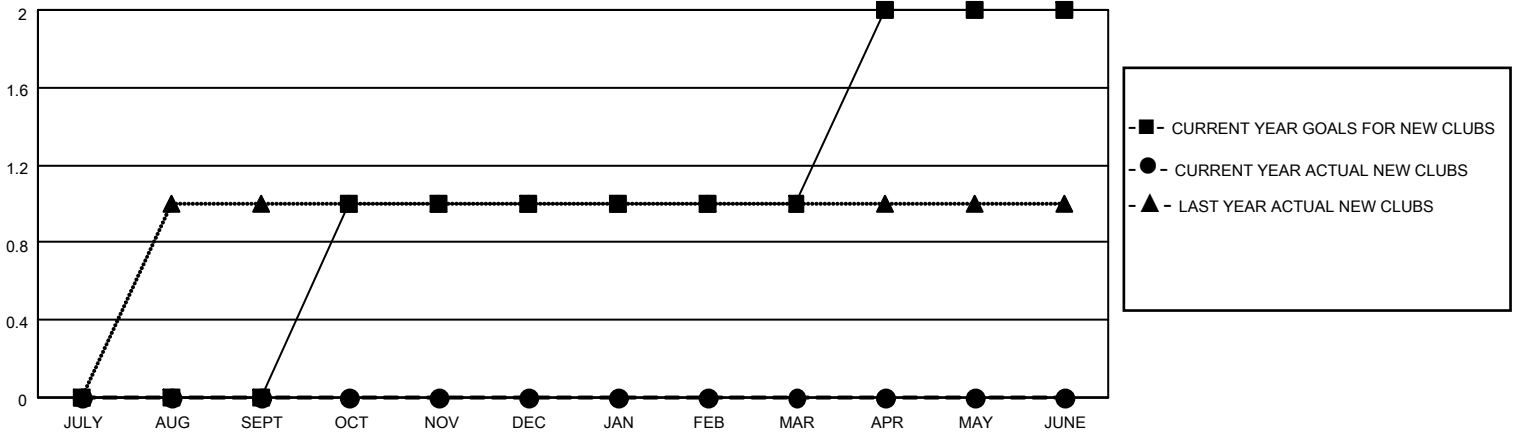
District C 1

Results as of: 4/30/2022

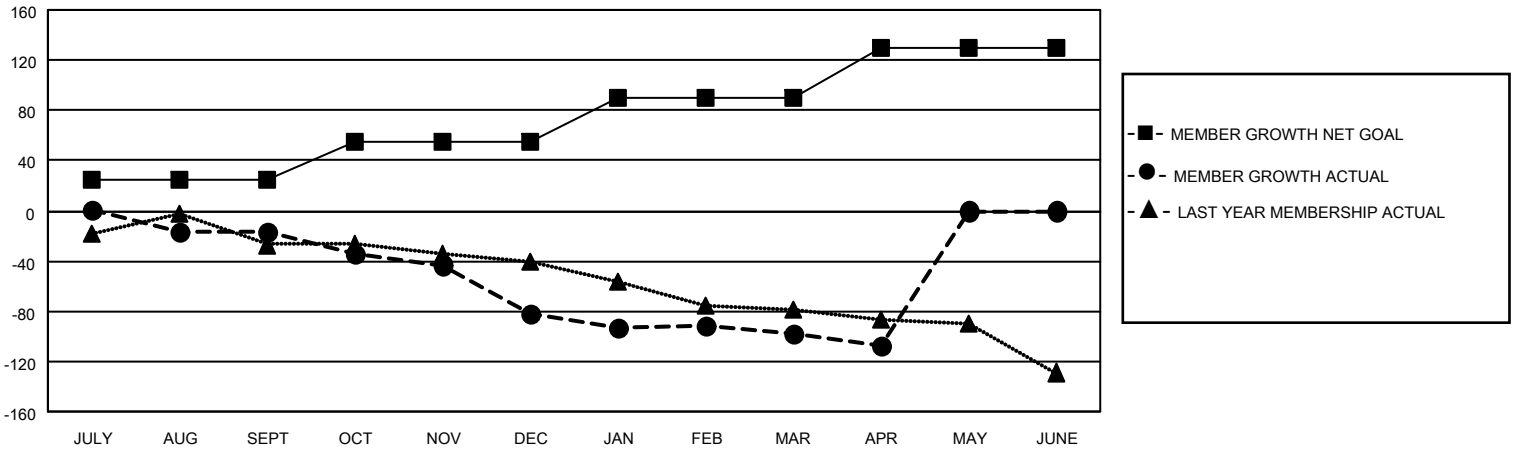
Clubs			
RESULTS FOR 2021-2022			
QUARTER	NEW CLUB GOAL	NEW CLUBS	DROPPED CLUBS
JULY/AUG/SEPT	0	0	2
OCT/NOV/DEC	1	0	2
JAN/FEB/MAR	0	0	2
APR/MAY/JUNE	1	0	0

Members			
RESULTS FOR 2021-2022			
QUARTER	MEMBER GROWTH NET GOAL	MEMBER GROWTH ACTUAL	DROPPED MEMBERS ACTUAL (including transfers)
JULY/AUG/SEPT	25	29	42
OCT/NOV/DEC	30	15	77
JAN/FEB/MAR	35	70	79
APR/MAY/JUNE	40	13	22

GOALS AND ACTUAL NEW CLUBS CUMULATIVE



GOALS AND ACTUAL MEMBERS CUMULATIVE



DROPPED CLUBS: 6

32 CLUBS OF 96 ADDED 1 OR MORE NEW MEMBERS

GENDER DISTRIBUTION

MALE	1,040 (62.76%)
FEMALE	617 (37.24%)
NON BINARY	0 (0.00%)
PREFER NOT TO ANSWER	0 (0.00%)

DROPPED MEMBERS

[CLICK HERE FOR CUMULATIVE MEMBERSHIP DATA](#)

DECEASED	25
CLUB CANCELLED	32
OTHER	163
TOTAL	220

TOTAL FAMILY UNIT MEMBERS 314

FAMILY MEMBERS PAYING HALF DUES 159